

For more information or to support our work, please contact:

Shona Nicholson or Mary Logan
oidh@phc.ox.ac.uk



The Vision

ENHANCING PATIENT CARE

- Incorporating **new models of care**, including more **patient-centred** and distributed care pathways harnessing mobile health, wearables, remote approaches to consultation, monitoring and consultation, diagnostics and stratified treatments, all of which shifts more power to health consumers.
- Working with collaborators such as the **Bennett Institute for Applied Data Science** and the **Oxford Internet Institute** (OII), to address issues of usability, trust and fairness, and to develop practical tools for clinicians.



HARNESSING DIGITAL TRANSFORMATION

- The **Nuffield Department of Primary Care Health Sciences** is host to the world's longest established and largest electronic health records databases. AI and machine learning are being used to explore these data, and to develop prediction tools that can underpin a new era of **precision medicine**, leading to more **effective prevention and treatment**.
- Our work evaluating digital interventions considers new ways of assessing their usefulness, including the key issues of **digital inclusion**, and the **green impact** of digital approaches.



BUILDING A KNOWLEDGE POWERHOUSE

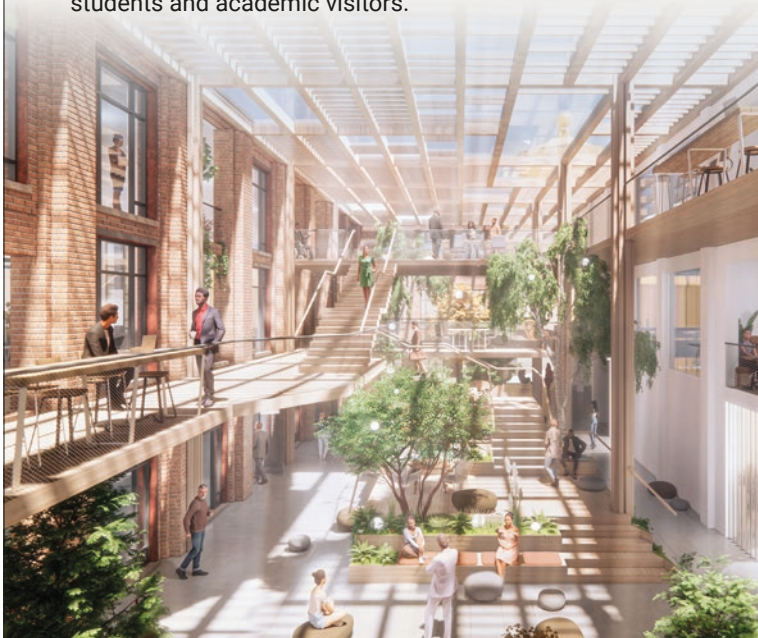
- We will continue to invest in our staff with key skills training and engage in knowledge transfer through partnerships with **industry and health care providers around the world**.
- In 2022, we launched two innovative Masters programmes: **Applied Digital Health**, an interdisciplinary learning experience, spanning medicine, social and behavioural science, economics, engineering, artificial intelligence, and data science, and **Global Health Leadership**, to develop experienced leaders with the skills to deliver affordable, effective and efficient healthcare in complex global systems.



The Future

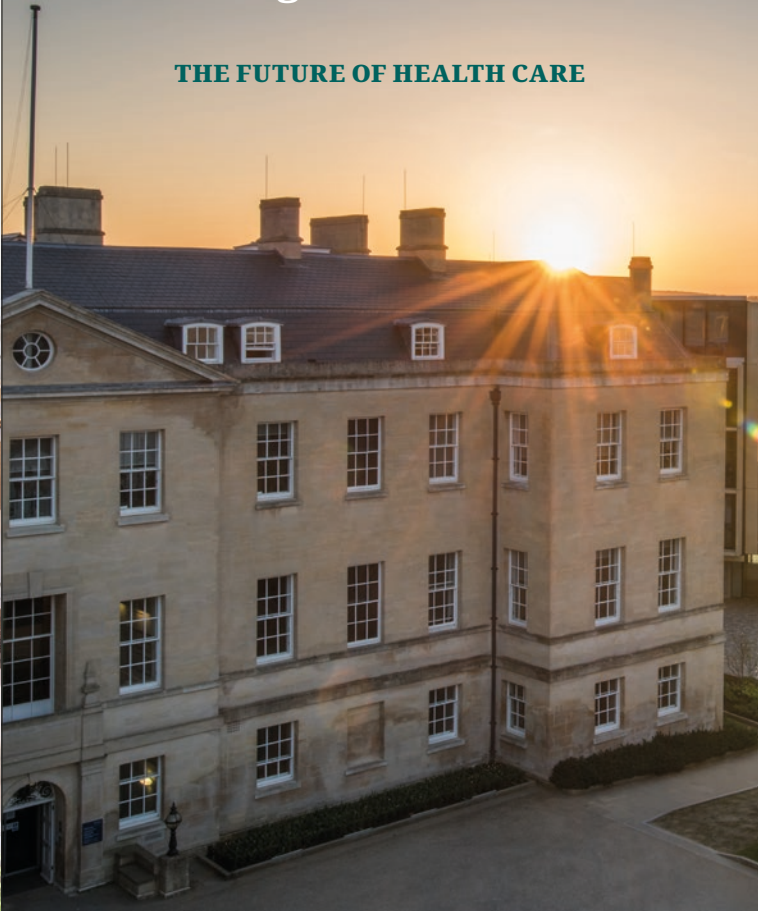
The new home of the **Oxford Institute of Digital Health**: A rich ecosystem for academic teaching, research, and collaboration, at the heart of the exciting Radcliffe Observatory Quarter.

The buildings, which once formed part of the Radcliffe Infirmary, are primed for their twenty-first century makeover, using environmentally friendly and sustainable methods, and will provide two lecture halls, offices and labs for researchers and staff, and study space for students and academic visitors.



The Oxford Institute of Digital Health

THE FUTURE OF HEALTH CARE



“Digital health should be an integral part of health priorities and benefit people in a way that is ethical, safe, secure, reliable, equitable and sustainable. It should be developed with principles of transparency, accessibility, scalability, replicability, interoperability, privacy, security and confidentiality.”

World Health Organization Global Strategy on Digital Health, 2020–25



Digital technologies are a catalyst for a fundamental shift in both how we live and manage our health, and will deliver leaner, greener and more person-centred services.

“Our vision is for digital health to enable those at most risk of illness to be identified and treated earlier, and given the tools to manage their health and care better.”

Professor Richard Hobbs

Head of Department and Director of the Oxford Institute of Digital Health



The **University of Oxford**, the world’s oldest English-speaking university, has been at the forefront of research, scholarship and innovation for over 850 years.

Oxford’s **Nuffield Department of Primary Care Health Sciences** is a global leader in primary health care, both here in the UK and around the world.

The department’s **Oxford Institute of Digital Health** is focussing on forward-thinking, interdisciplinary, and collaborative approach across academic, industry, health systems and government agencies, to harness digital technologies and **tackle the health challenges of the twenty-first century**.



“As a medical researcher myself, I recognise that the diffusion of digital technology in health care is already happening. Excitingly, there have been notable strides that AI has already made in medical science.

I’m delighted that the University of Oxford is at the forefront of this research and translation.

The Oxford Institute of Digital Health is a dynamic new hub and a vital part of the University’s ambition for applied digital health research to drive digitally-enabled community care to bold new heights. The aim being that health professionals can make better decisions for their patients.”

Professor Irene Tracey,
CBE, FRS, FMedSci.,
Vice-Chancellor