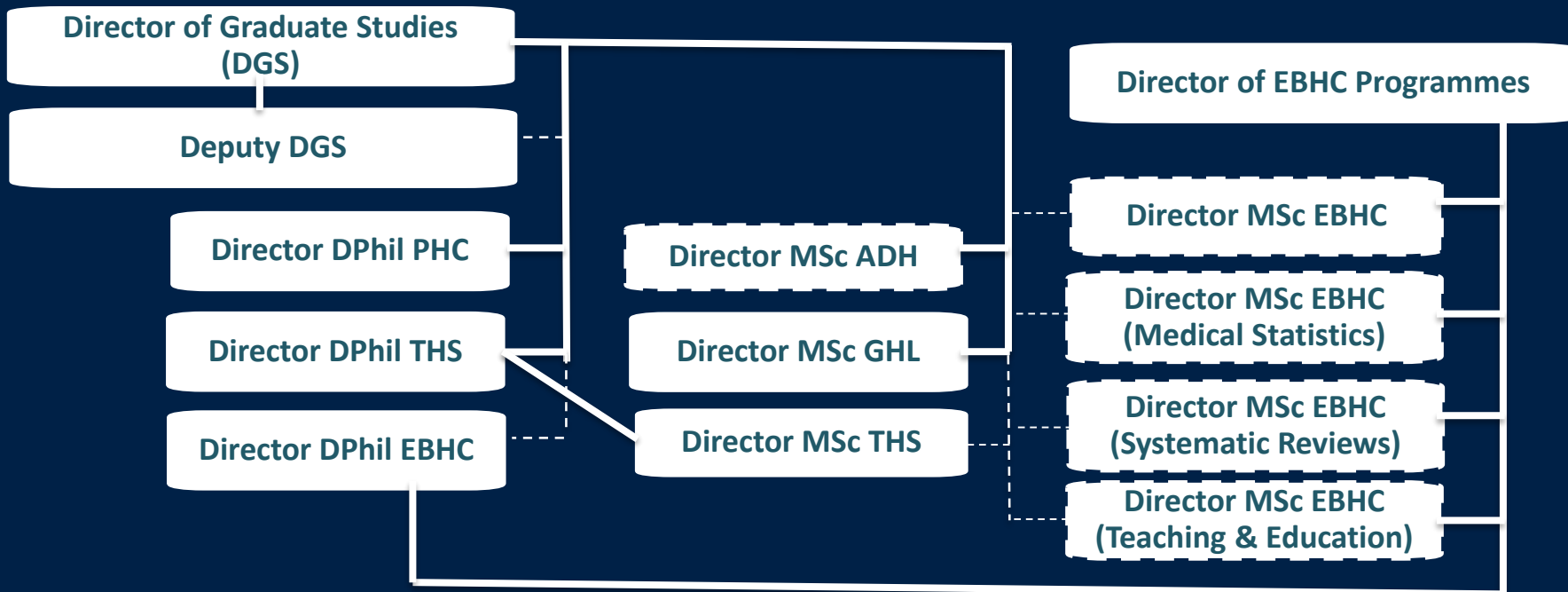


Supervising DPhils

Tuesday 1st July 2025

Post-graduate Programmes academic team



MEDICAL SCIENCES BOARD

Code of Practice for Research Student Supervisors

(Revised June 2023)

This Code of Practice for Research Student Supervisors in the Medical Sciences Division incorporates the requirements of **all** supervisors as set out in the [Policy and Guidance on Research Degrees](#)¹.

Any supervisor accepting a student is thereby accepting the obligations set out in the Policy on Research Degrees and by the Medical Sciences Board, as follows:

Eligibility to Supervise in the Medical Sciences Division

The Supervision Team

The Core Team

All research students in the Medical Sciences Division must have at least two² supervisors, both of whom must be established academics and meet the following criteria:

- Have a record of recent publications (i.e. within the last 5 years)
- Have an appropriate contract of employment to the completion of the student's studies, or have the agreement of the Head of Department to act as a supervisor³.

In addition, at least one member of the core team must previously have supervised a student to completion successfully (either at Oxford or elsewhere).

2022-23 Entry

Home

Modules

Search

DPhil Supervision at Oxford - Sciences



Welcome to this online course designed as a guide to DPhil supervision at Oxford.

Important: You must be enrolled in this course for your progress through the course to be tracked. **This is essential if you are completing this course for a departmental or divisional requirement.** You can check if you are enrolled via [this enrolment link](#).

Completing the course

You need to do the following in order to complete the course and register your course completion with your department:

- Complete all mandatory sections of the course (i.e. **view every page in the welcome section and sections 1-10**). After viewing all of the pages in a section, a green check mark should appear next to that section in the 'Modules' tab on the left-hand side of the page. You must be enrolled in the course for this to occur.

Quick Links

- You can check that you are enrolled in this course via [this enrolment link](#).
- Navigate to '[Welcome and overview](#)' to begin the course.
- Navigate to '[Modules](#)', if you would like to

I'd like to discuss best practice for co-supervision of a DPhil student

I want to hear the testimony of different people about what they value and any pointers about good practice

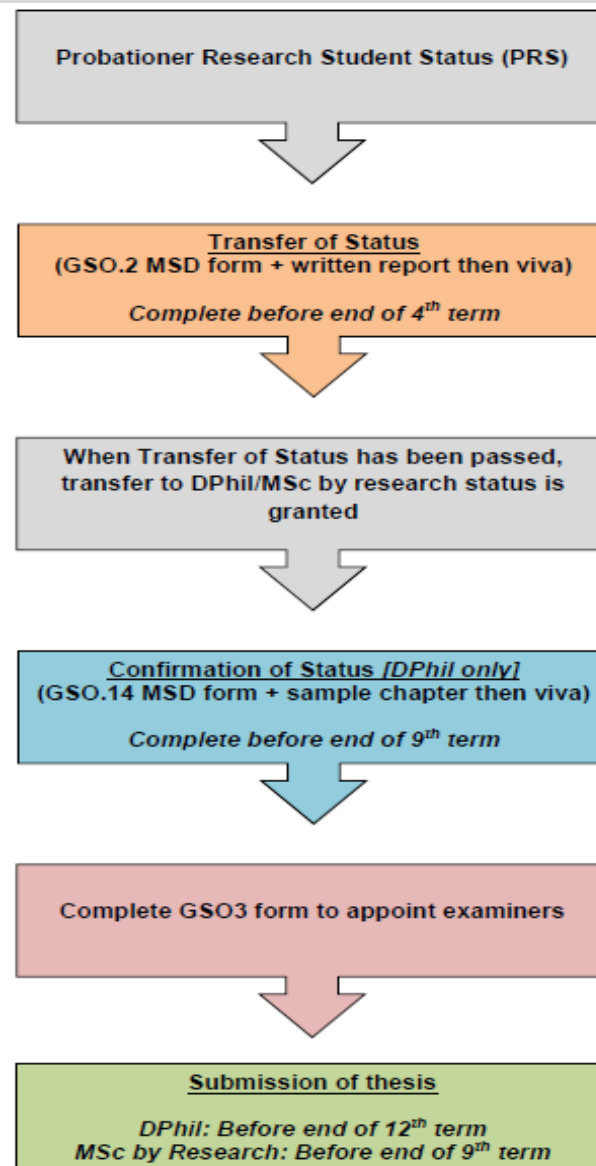
it would be useful to get a sense of the required balance between directing, coaching, and supporting students

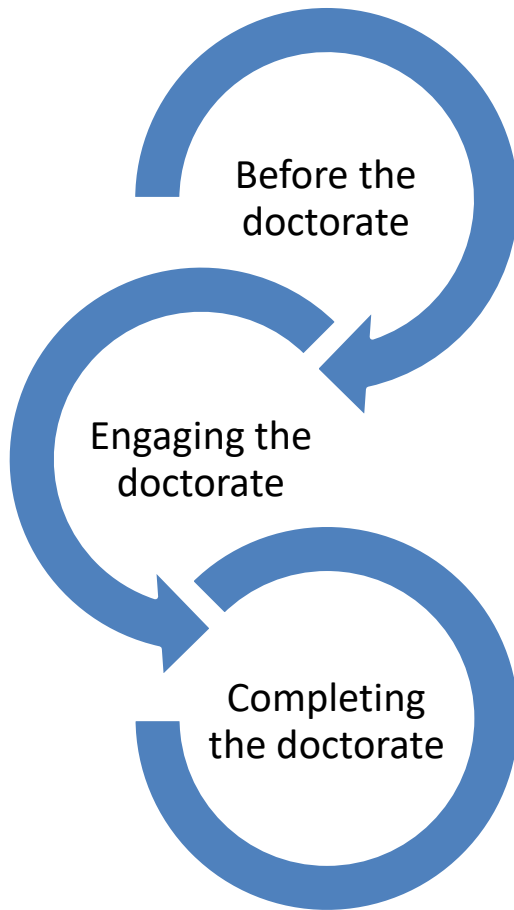
I'd just like to hear more first hand reflections on being a supervisor and/or being supervised to learn from experiences beyond what's on the Canvas course.

I would like to know a bit more about a) managing expressions of interest, and b) how it links with THS programme

How do supervisors help get the balance between delivery of a great thesis and the wider academic learning/career development?

The one thing I'd like to get out of it is how to guide students on what is 'enough' for a DPhil





THE DPHIL JOURNEY

Recognising the doctorate as much more than merely conducting a research project, and seeing it as a shared educational endeavour is fundamental to understanding the doctoral journey - a journey that is complex and mutable, constantly shifting as the candidate moves from novice to expert, from dependence to growing autonomy

I'd like to discuss best practice for co-supervision of a DPhil student

I want to hear the testimony of different people about what they value and any pointers about good practice

it would be useful to get a sense of the required balance between directing, coaching, and supporting students

I'd just like to hear more first hand reflections on being a supervisor and/or being supervised to learn from experiences beyond what's on the Canvas course.

I would like to know a bit more about a) managing expressions of interest, and b) how it links with THS programme

How do supervisors help get the balance between delivery of a great thesis and the wider academic learning/career development?

The one thing I'd like to get out of it is how to guide students on what is 'enough' for a DPhil

Questions?